

Upcoming Events

2015

Star Wars Weekends

Disney's Hollywood Studios®

May 15–17, 22–24, 29–31 and June 5–7, 12–14

Night of Joy

Magic Kingdom® Park

September 11 and 12

Mickey's Not-So-Scary Halloween Party

Magic Kingdom Park

September 15, 18, 20, 22, 25, 27;

October 1, 2, 4, 6, 8, 9, 12, 13, 15, 16, 18, 20, 22, 23, 25, 27, 29, 31;

November 1

Epcot® International Food & Wine Festival

Presented by CHASE®

Epcot®

September 25–November 16

2016

Epcot® International Flower & Garden Festival

Epcot

March 2–May 15

For more information, please visit disneyworld.com.

Special Thanks to our Epcot International Flower & Garden Festival Participants

| | |
|--|---|
| Audubon Florida | National Park Foundation |
| Bonsai Societies of Florida | National Watermelon Promotion Board |
| Cherry Lake Tree Farm | |
| Commercial Companies, Inc. | National Wildlife Federation |
| Dora Landscaping Company | The Nature Conservancy |
| EcoWalls, LLC | Nueske's® |
| Enviro Tree Service | Pentair Aquatic Eco-Systems, Inc. |
| Florida Federation of Garden Clubs, Inc. | Rain Bird Corporation |
| | Simply Orange® |
| Florida Nursery, Growers and Landscape Association | The Original Sauce Man LLC |
| | Twinings of London® |
| ForeverLawn, Inc. | University of Florida IFAS/ Extension |
| Fresh from Florida® | |
| GoGo squeeze™ | ValleyCrest Landscape Maintenance, Inc. |
| Joffrey's Coffee & Tea Co.® | Visionscape Landscaping Solutions |
| Landscape Structures, Inc. | |
| LegacyScapes | |

EpcotInSpring.com

Tips & Information

Guest Relations Please visit Guest Relations located East of Spaceship Earth for:

- Questions and Concerns
- Ticket Upgrades
- Separated Guest Assistance
- Lost and Found
- Services for Guests with Disabilities



Services for International Guests are available at Guest Relations.

Los Servicios para huéspedes internacionales están disponibles en la oficina de Guest Relations.

Des services pour les visiteurs internationaux sont disponibles au Guest Relations.

Serviços para visitantes internacionais estão disponíveis no Guest Relations.

Dienste für internationale Gäste sind bei der Gästebetreuung erhältlich.

ゲストリレーションにて世界各国からのゲストの皆様向けのサービスをご案内しております。

Shopping

Here at Epcot®, you don't need a passport to embark on an international shopping spree! Shop the World Showcase pavilions and you will discover authentic goods representing cultures around the globe — from delicate fragrances in France to handmade ornaments in Germany.

Merchandise Package Delivery and Pickup Instead of carrying your purchases all day, have them delivered to The Gift Stop near the main Park entrance or to World Traveler at International Gateway and pick them up as you exit the Park. Please allow three hours for delivery. If you prefer, have your purchases delivered directly to your Disney Resort hotel. See a Merchandise Cast Member for more details.

Dining

Dining Reservations Table-Service restaurants book quickly, so please make reservations at www.disneyworld.com/dine, by calling 407-WDW-DINE (939-3463), or by visiting any Guest Relations location. *Reservations must be canceled at least one day prior or a per person cancellation charge may be incurred (charge varies by location).*

Mickey Check

Look for the Mickey Check on menus throughout the Walt Disney World Resort for kids' meals and other items that meet Disney Nutrition Guidelines. For more information, please visit www.disneymickeycheck.com. For special dietary needs, please see a restaurant manager or chef.

Payment Options

Walt Disney World Resort accepts Disney Visa® Cards, Disney Rewards® Redemption Card, Disney Gift Card, Visa®, MasterCard®, Discover®, American Express®, Diners Club®, JCB®, traveler's checks, cash and Disney Dollars.

Park Rules

To provide a comfortable, safe, and enjoyable experience for our Guests, please comply with Park rules, signs and instructions including:

- All bags are subject to inspection prior to admission.
- Proper attire is required.
- Smoking is allowed only in designated areas.
- Weapons are strictly prohibited.

Additional details and a complete listing of Park rules are available at Guest Relations or www.DisneyWorld.com/ParkRules.

Leaving the Park? All Guests who wish to leave the Park and return later in the day may do so by presenting their original admission media.

- To get to the **Epcot parking lot**, take a Parking Tram located outside the front of the Park.
- To get to **Magic Kingdom® Park**, take a Monorail to the Transportation and Ticket Center, and then a Monorail or Ferryboat to the Park.
- To get to **Disney's Animal Kingdom® Theme Park**, take a Bus located outside the front of the Park.
- To get to **Disney's Hollywood Studios®**, walk, or take a FriendShip Boat from International Gateway, or take a Bus located outside the front of the Park.
- To get to the **Downtown Disney® Area**, take Resort Transportation to any Disney Resort hotel, and then another Bus to the Downtown Disney Area.
- To get to **Disney's Typhoon Lagoon Water Park** before 2:00pm, take Resort Transportation to any Disney Resort hotel, and then a Bus to the Downtown Disney Area and Disney's Typhoon Lagoon Water Park. After 2:00pm, take a Bus directly to Disney's Typhoon Lagoon Water Park.
- To get to **Disney's Blizzard Beach Water Park**, take Resort Transportation to any Disney Resort hotel, and then a Bus to the Park.
- To get to **Disney's Yacht & Beach Club Resorts, Disney's Boardwalk Inn and Villas or the Walt Disney World Swan and Dolphin Hotels**, walk or take a FriendShip Boat from International Gateway.
- To get to all other **Disney Resort hotels**, take a Bus located outside the front of the Park.



©Disney 3/15

Accessibility and Mobility

Courtesy Wheelchairs Complimentary wheelchairs are available for travel to and from the accessible parking lot and the nearest wheelchair rental location. These courtesy blue wheelchairs are not permitted for use inside the Theme Parks.

Companion Restrooms ♿ Companion-assisted restroom facilities are available in addition to facilities designed for access by Guests with mobility disabilities. These restrooms are located at:

- Spaceship Earth East
- Future World East & West
- The Land - Soarin®
- Showcase Plaza - Refreshment Port
- Germany
- The American Adventure
- Morocco
- Norway

Auxiliary Entrance Limitations Some attractions have auxiliary entrances for Guests in wheelchairs. These entrances are not intended to bypass waiting lines. Guests with disabilities and up to five members of their party may enter through these entrances. The rest of the party should use the standard queue.

Dining and Shopping Locations Some counter-service and merchandise locations have narrow queues formed by railings that may be difficult for Guests using wheelchairs. At these locations, we suggest that a member of your party order and transport the food, or contact a Cast Member for assistance.

Viewing Areas 🚌 Parade routes and some show areas have designated viewing areas for Guests with disabilities. These areas are filled on a first-come, first-served basis. Plan to arrive early, as space is limited. Viewing spaces cannot be reserved or guaranteed. Parties larger than six may be asked to separate and reunite afterwards.

Accessible Transportation The following options are available for Guests in wheelchairs or ECVs:

Buses can accommodate various types of wheelchairs and ECVs. The standard lift size is 30" x 48". The wheelchair or ECV must fit the lift without being forced and be securely fastened in the restraints. We recommend that Guests using ECVs transfer to a bus seat while onboard.

Watercraft access varies depending on the type of watercraft and the existing water levels and conditions.

Monorail system can be accessed by elevators and/or ramps, at Transportation and Ticket Center, Magic Kingdom® Park, Epcot®, Disney's Grand Floridian Resort & Spa, Disney's Polynesian Village Resort and Disney's Contemporary Resort.

Beyond Epcot®

Resorts/Special Reservations Disney Resort hotels offer special equipment and facilities for Guests with disabilities. For information specific to individual Resorts, please call Walt Disney World Resort Special Reservations at 407-939-7807 [voice] or 407-939-7670 [TTY].

Accessibility information and accommodations for the following locations:

Water Parks Guest Services locations at Disney's Typhoon Lagoon Water Park and Disney's Blizzard Beach Water Park.

Downtown Disney® Area Guest Relations locations at Downtown Disney® Marketplace and Downtown Disney® West Side.

Don't Forget Your Times Guide! Pick up the weekly Times Guide to get additional information regarding shows, entertainment, operating hours and even character appearances!

- Entertainment, outdoor shows and other Guest offerings are subject to change without notice.
- Theater venues have limited capacity and may fill up before show time. Please ensure your entire party is together prior to entering the facility.
- Some walkways in the Park may close periodically.

Select, Reserve, Go, Repeat!

Save time with DisneyFastPass+



With Disney FastPass+® service, you can reserve access to some must-do fun and even make changes on the go with the My Disney Experience app**.

Download the My Disney Experience app for free or look for this icon on the map and go! FP+

You can also visit MyDisneyExperience.com on your mobile browser.

Wi-Fi is available in most areas. Some attractions and shows may have limited availability.

*Valid Theme Park admission and online registration required. Disney FastPass+ attractions and entertainment experiences, the number of selections you can make and available arrival windows are limited. **Availability subject to handset limitations and features may vary by handset or service provider. Message, data and roaming rates may apply. Coverage not available everywhere. If you're under 18, get your parent's permission first.

Mobility Disabilities

Guest Amenities Available for Rent or Deposit

Wheelchairs and Electric Conveyance Vehicles (ECVs) are available for rent at any of the four Parks. Available on a first-come, first-served basis and may not be transferred from Park to Park.

Park Hopping Options

If you plan to visit more than one Park on the same day, retain your deposit ticket from the first Park. You will be able to obtain a replacement wheelchair or ECV the same day, if available, at the next Park at no additional charge.

Rental Locations

- Stroller & Wheelchair Rental Shop to the left of Spaceship Earth
- International Gateway

Complimentary Amenities and Services for use at the Park

- **Wheelchair Replacement Location**
- Germany — Karamelle-Küche

Companion Restrooms

See map inside for locations indicated with ♿

More Options

Electric Conveyance Vehicles (ECVs)

Limited number available on a first-come, first-served basis at the rental location.

Must be 18 years of age or older to rent ECVs.

RESERVATIONS MAY NOT BE MADE IN ADVANCE. Available on a same-day basis and may only be used in the Park where they are rented. Your ECV will be held if you wish to leave and return to the same Park.

Safety in the Park

Mobility Scooters/ECVs

Please keep your speed to the walking speed of those around you.

Adjust and lower speed while maneuvering through enclosed spaces like restrooms, merchandise and food and beverage locations.

Park your device in safe locations clear from walkways and stairs.

Evacuation

In the event of an evacuation, Guests may be required to walk certain distances and navigate stairs or narrow walkways. In this case, please have a member of your party assist you, or wait in a vehicle for assistance.

Transfers

Some attractions require Guests to transfer from their wheelchairs to the ride. Cast Members are not permitted to physically lift Guests in the transfer.

Visual Disabilities

Braille Guides Printed in Braille and large print text to provide an overview of the Theme Park.

Portable Tactile Maps Provides a tactile representation of building boundaries, walkways, and landmarks for each area of the Theme Parks. Presented in a booklet format.

Audio Description 🗣️ Utilizes Disney's Handheld Device to provide supplemental audio information and narration at specific attractions and outdoor locations via an interactive audio menu. Amenities available for \$25 refundable deposit.

Guest Relations 🗺️ See map inside for locations.

Stationary Braille Maps Large print maps with Braille overlay and raised graphics to highlight key landmarks and attractions. Located in Future World near Guest Relations and the Tip Board by the fountain. Also located in World Showcase near Guest Relations at International Gateway and on the bridge from Future World near Duffy the Disney Bear.

For additional information about Theme Park services and options, please visit Guest Relations. You may also obtain information, including parade & show times and details about restaurant menus, by calling 407-827-7935.

Service Animals

Service animals must be under the control of the owner at all times and should remain on a leash or in a harness. Cast Members are not able to take control of service animals. Guests with service animals should follow the same attraction entrance procedures as Guests using wheelchairs.

Service Animal Restrictions Due to the nature of some attractions, service animals may not be permitted to ride. At these locations, please inquire with a Cast Member about available options including a Rider Switch with a member of your party or a portable kennel.

- **Mission: SPACE®**
- **Test Track®** Presented by Chevrolet®
- **Soarin'®**
- **The Sum of All Thrills™** Presented by Raytheon®

Hearing Disabilities

Assistive Listening 🗣️ Utilizes Disney's Handheld Device to amplify sound through headphones or induction neck loop at specific attractions.

Handheld Captioning 🗣️ Utilizes Disney's Handheld Device to display text at select attractions.

Video Captioning 🗣️ Caption-ready monitors designated with a "CC" symbol can be activated by remote control built into Disney's Handheld Device.

Amenities available for \$25 refundable deposit.

Guest Relations 🗺️ See map inside for location.

Reflective Captioning 🗣️ Available at many theater-type attractions, utilizing LED display to project desired captions onto a panel positioned in front of you. See a Cast Member at the attraction for assistance.

Written Aids Packets containing dialogue, narrations, flashlights, pen and paper are available at or near performance areas or entrances for most shows and attractions.

Hosts with basic abilities in Sign Language can be identified with the appropriate language pin on their nametag.

Sign Language Interpretation 🗣️ Available at Epcot® on Fridays. Schedules are available at Guest Relations that list specific interpreted show times for all Walt Disney World Theme Parks.

For future visits to request confirmation of our interpreted performance schedule or to request interpretation for other special events and shows, call a minimum of 14 days in advance at 407-824-4321 [voice] or 407-827-5141 [TTY].

GUIDE FOR GUESTS WITH DISABILITIES



EPCOT® INTERNATIONAL FLOWER & GARDEN FESTIVAL

• FRESH EPCOT •

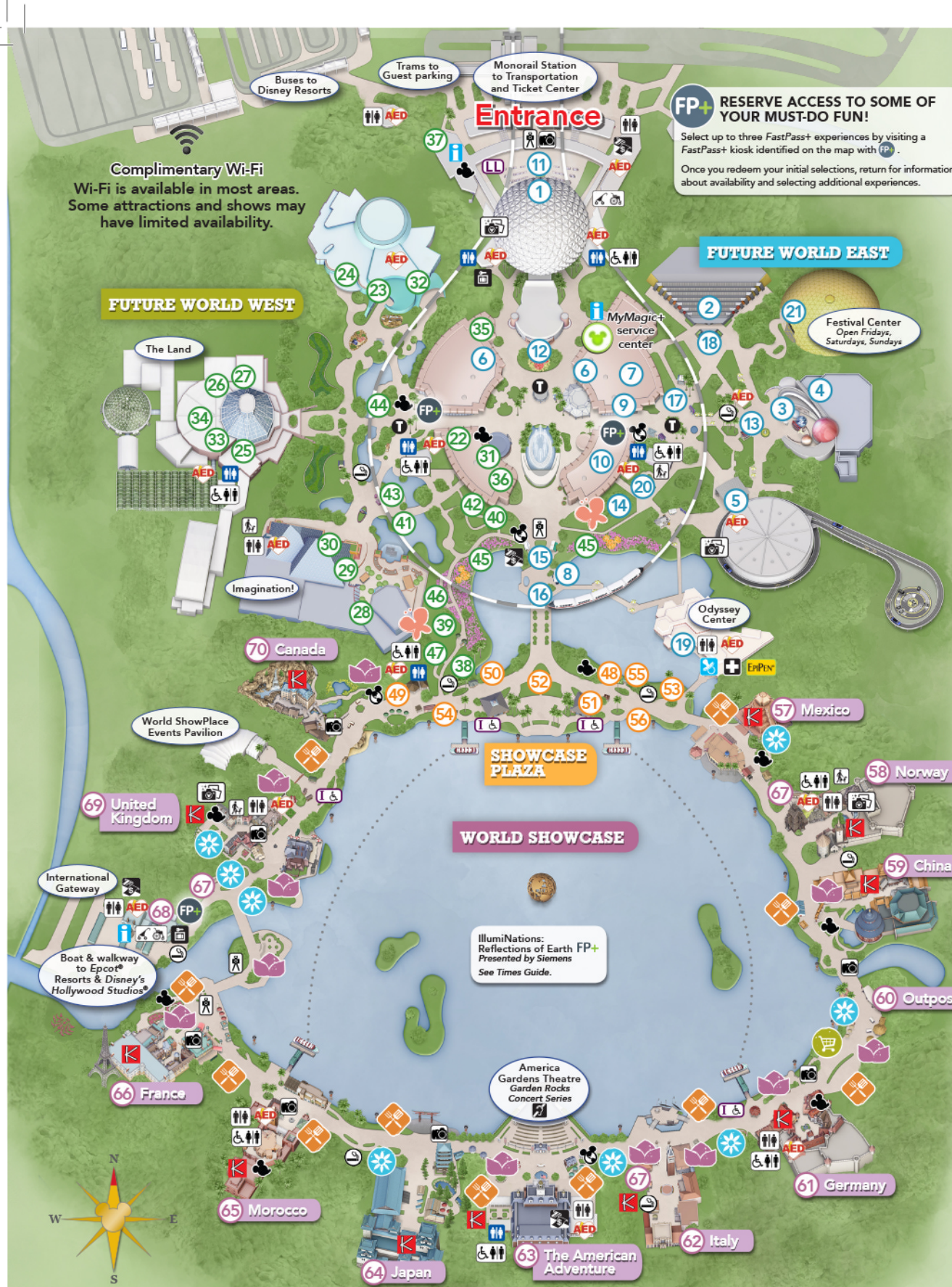
MARCH 4–MAY 17, 2015



Download the My Disney Experience app from an app store or by scanning this code to access real-time Park information (details inside). Or visit MyDisneyExperience.com on your mobile browser.

Show the world your Disney Side

#DISNEYSIDE



FUTURE WORLD EAST

- Spaceship Earth** Presented by Siemens® **FP+** **HC** **RC** Explore the history of communications, from the Stone Age to the Computer Age. **Mobility Access:** Enter through the exit on RIGHT or LEFT.
- Ellen's Energy Adventure** **HC** **RC** Take a multimedia romp through time and Ellen DeGeneres' subconscious. **45 minutes. Mobility Access:** See a Cast Member for transfer information.
- Mission: SPACE** Presented by HP **FP+** **HC** **RC** Experience NASA-style training with a simulated space launch. Join the Orange Team for an intense journey or the Green Team for a milder mission. **Expectant mothers should not ride. Mobility Access:** Transfer Device available. See a Cast Member for additional information.
- Advanced Training Lab** **HC** Further your astronaut training in this interactive play area. **Mobility Access:** Located at the exit of the *Mission: SPACE* Attraction. Guests wishing to bypass the *Mission: SPACE* Attraction may enter through the shop to the left of the attraction.
- Test Track** Presented by Chevrolet® **FP+** **HC** **RC** **40*/102 cm.** Create your own virtual concept vehicle and put it through the paces on the exhilarating hills, hairpin turns and straight-aways of the Test Track circuit. **Mobility Access:** Transfer Practice Vehicle available. Contact a Cast Member for additional information.
- Innoventions East & West** **HC** Imagine and invent in two pavilions housing interactive games and exhibits. **Mobility Access:** Enter through main entrance. See a Cast Member for boarding requirements.
- The Sum of All Thrills™** Presented by Raytheon® **HC** **RC** **48*/122 cm.** Innoventions East: Uncover your inner engineer as you design and customize your own thrill ride!
- Disney Phineas and Ferb: Agent P's World Showcase Adventure** **HC** Search for clues with Perry the Platypus to defeat Dr. Doofenshmirtz before he takes over World Showcase. **Interactive adventure. At your own pace. Additional starting points at International Gateway. Look for 67 on the map.**
- Electric Umbrella** Hosted by Coca-Cola® **LD** **S** Angus burgers, chicken and freshly tossed salads.
- Mouse Gear** One-stop shopping destination for Disney Character gifts and Park souvenirs.
- NEW! Goofy About Spring** See Goofy, Chip 'n' Dale and friends in topiary as they welcome spring!
- NEW! Spring is in the Air** Topiary Butterflies.
- Disney•Pixar's Buzz Lightyear Topiary**
- Cactus Road Rally with Disney•Pixar's Mater and Lightning McQueen Topiaries** *Closes at dusk.*
- Farmer Mickey Mouse and Minnie Mouse Topiaries**
- Phineas and Ferb Topiaries**
- Gardener's Palette** Presented by Rain Bird Corporation Explore a palette bursting with vibrant color and see color theories and language come to life using vivid blooms and foliage.
- NEW! Prehistoric Plants**
- NEW! Trial Garden**
- Purple Martins** Presented by Audubon Florida
- Garden Gifts**

FUTURE WORLD WEST

- Epcot Character Spot** **FP+** **HC** Meet Mickey and his pals in this cartoon setting!

FLOWER & GARDEN FESTIVAL OFFERINGS

- Outdoor Kitchen** Disney Dining plans accepted. See menu boards for eligible Snacks.
- Topiary**
- Play Garden**
- Garden**
- Festival Merchandise**

LEGEND

Symbols on Map

- Amenities**
- Restrooms**
- Accessible Restrooms**
- Companion Restrooms**
- First Aid**® Presented by Florida Hospital
- EpiPen**® (epinephrine) Auto-Injector
- Guest Relations**
- ATMs** Presented by Chase®
- Automated External Defibrillators**
- Smoking Locations**

- Baby Care Center**
- Stroller and Wheelchair Rentals**
- Locker Rentals**
- Service Animal Relief Areas**
- Disney PhotoPass**® Photographers
- Memory Maker** Sales Center
- Nikon**® Picture Spot
- Assistive Listening**
- Park Information**
- Character Greetings**
- Disney Vacation Club**® Information Center

- Tips and Show Times**
- Kidcot Fun Stops**
- IllumiNations** Viewing for Guests with Disabilities
- Leave A Legacy** Locator
- MyMagic+** service center
- FastPass+** kiosks available in English, Spanish and Portuguese.

*Emergency services available by calling 911.

Symbols in List

- Attraction/Show Considerations**
- FastPass+** experience
- Single Rider** Queue
- Physical Considerations**
- Minimum Height Requirement**
- May remain in wheelchair/ECV**
- Must transfer from wheelchair/ECV**
- Must transfer to standard wheelchair**
- Must transfer to standard wheelchair, and then to ride vehicle**
- May be frightening for children**

SHOWCASE PLAZA

- Duffy the Disney Bear** Meet Mickey's world-traveling teddy bear!
- Refreshment Port** **LD** **S** Ice cream and frozen drinks.
- Pineapple Promenade** Spicy Hot Dog with Pineapple Chutney; Pineapple Soft-Serve with Sammy's Beach Bar Red Head Macadamia Nut Flavored Rum or Parrot Bay Coconut Rum; Frozen Desert Violet Lemonade; Berry Tea Cocktail with Twinings® Cold-Brewed Mixed Berry Tea; Sparkling Pineapple Wine; Ace Pineapple Hard Cider.
- Joffrey's Coffee & Tea Co.**®
- NEW! Anna and Elsa Topiaries** For the first time in forever, see Anna and Elsa from Walt Disney Animation Studios hit *Frozen* in topiary form.
- NEW! Bold Bromeliads**
- Garden Emporium**
- Garden Oasis**
- Garden Treasures**

WORLD SHOWCASE

- Mexico**
- Gran Fiesta Tour Starring The Three Caballeros** **HC** **RC** Discover the sights of Mexico and the antics of three feathered amigos on this boat ride. **Mobility Access:** Follow directional signs to designated load area.
- San Angel Inn Restaurante** **LD** **S** Authentic Mexican cuisine. Premium margaritas and tequilas.
- La Hacienda de San Angel** **LD** **S** Regional Mexican cuisine. Premium margaritas and tequilas.
- La Cantina de San Angel** **LD** **S** Nachos, tacos, quesadillas, beer and margaritas.
- La Cava del Tequila** **S** More than 200 tequilas and handcrafted margaritas. *Not on Disney Dining plans.*
- Jardin de Fiestas** Achiote marinated pork taco; Veggie Quesadilla; Mexican Chocolate Custard; Blueberry/Pomegranate Margarita; Tecate with Patrón Citrónge; Mexican Sangria; Tequila Flight.
- NEW! Pepper Fire Garden**
- Extraordinary Orchids**
- Norway**
- Princess Storybook Dining at Akershus Royal Banquet Hall** **LD** **S** **SS** Character dining with Disney Princesses. American and Norwegian cuisine.
- Kringle Bakeri Og Kafe** **S** Pastries and sandwiches.
- China**
- Reflections of China** **HC** **RC** **360°** View the places and faces of the world's most populous country in this Circle-Vision 360 film. **14 minutes.**
- Nine Dragons Restaurant** **LD** **S** Chinese cuisine, wine and beer.
- Lotus Blossom Café** **LD** **S** Egg rolls and orange chicken with rice.
- Lotus House** Kung Pao Chicken Burrito; Beijing Style Candied Strawberries; Vegetable Spring Roll; Oolong Peach Bubble Tea; Kung Fu Punch; South Sea Storm; Honey Mango Wine Cooler; Tsingtao Beer; Plum Wine.
- Year of the Sheep Topiary**
- Outpost**
- Simba and friends Topiaries**
- NEW! Monkey Kingdom Sand Sculpture** In recognition of the Disney nature release of *Monkey Kingdom*, see a new sand sculpture come to life starting on April 17 with the reveal of the completed sand sculpture on Earth Day, April 22.

- Germany**
- Biergarten Restaurant** **LD** **S** **SS** Oktoberfest buffet with live entertainment. German cuisine.
- Sommerfest** **LD** **S** Bratwurst, potato salad, beer and desserts.
- Karamell-Küche** Featuring Werther's® Original Caramel. Freshly made caramel corn, caramel covered apples and strawberries.
- Florida Fresh** Watermelon Salad; Shrimp and Stone Ground Grits; Florida Blueberry and Lemon Curd Tart; Watermelon Passion Fruit Slush; Key Lime Sparkling Wine; Blonde Ale; Channel Marker Red Ale; Feast of Flowers Farmhouse Ale (Festival exclusive); Jai Alai®; Beer Flight.
- Snow White and the Seven Dwarfs Topiaries**
- Garden Boutique**
- Italy**
- Tutto Italia Ristorante** **LD** **S** Pasta and fine Italian specialties.
- Tutto Gusto Wine Cellar** **LD** **S** Italian wines and imported cheeses. *Not on Disney Dining plans.*
- Via Napoli Ristorante e Pizzeria** **LD** **S** Italian pastas, wood-fired pizzas, Piatti alla Parmigiana and tiramisu.
- Primavera Kitchen** Pinwheel of Mozzarella, Prosciutto, Ciabatta Bread; Cheese Manicotti; Lemon Custard with Raspberries; Pinot Grigio; Chianti; Prosecco; Corbinello; Moscato; Bellini; Rossini; Frozen Italian Primavera; Moretti Lager and La Rossa.
- Lady and the Tramp Topiaries**
- NEW! Miss Piggy Topiary and Tour de Fleurs Garden**
- NEW! Pizzeria Garden**
- The American Adventure** **HC** **RC** **360°** Explore the past and future of America through film, music and *Audio-Animatronics*®. **30 minutes.** **Mobility Access:** See Cast Member at entrance for access to second floor.
- Liberty Inn** Hosted by Coca-Cola® **LD** **S** Angus burgers, hot dogs, chicken, steak and freshly tossed salads.
- Fife & Drum Tavern** **LD** **S** Turkey legs, frozen beverages and beer.
- Espresso, Coffee and Pastries at The American Adventure** Presented by Joffrey's Coffee & Tea Co.® Chocolate Stout latte featuring Monin chocolate, caramel and hazelnut with milk and espresso; Iced Bailey's latte featuring Bailey's Irish Cream liqueur with milk and espresso over ice.
- THE SMOKEHOUSE: Barbecue and Brews** Pulled Pig Slider; Beef Brisket Burnt Ends Hash; Smoked Drebziner Sausage; "Pigglylicious" Bacon Cupcake; Floridian Hefeweizen; Category 3 IPA; Maple Bacon Stout; Billy's Chilies; Beer Flight; The Original Rib Shack Red Wine; Frozen Lemonade; Frozen Lemonade with Palm Ridge Reserve Whiskey; R.C. Sweet Tea made with Twinings® Cold-Brewed English Classic Tea.
- Disney•Pixar's Woody Topiary**
- Japan**
- Teppan Edo** **LD** **S** **SS** Steak, seafood and chicken-grilled in front of you by Teppan Chefs.
- Tokyo Dining** **LD** **S** **SS** Sushi, bento box, grilled items and traditional Japanese cuisine.
- Katsura Grill** **LD** **S** Teriyaki combinations, udon noodles, sushi and curry. **Mobility Access:** Guests can access the Katsura Grill via the pathway behind the Pagoda.
- Kabuki Cafe** **S** **SS** Shaved ice, sushi snacks, Japanese beers and cold beverages.
- Hanami** Frushi; Teriyaki Curry Bun; Salmon Sushi; Kirin Draft; Yuzu Plum Wine Slush; Strawberry Nigori; Karatamba Sake.

- NEW! Japanese Mini Garden**
- Morocco**
- Restaurant Marrakesh** **LD** **S** **SS** Beef, lamb and chicken dinners with a live belly dancing show.
- Tangerine Café** **LD** **S** Chicken and lamb shawarma, wraps and salads.
- Spice Road Table** **LD** **S** Moroccan small plates and specialty beverages featuring regional flavors from the Mediterranean.
- Taste of Marrakesh** Harissa Chicken Kebabs; Falafel Pocket with cucumber tomato salad and Tahini Sauce; Pistachio Baklava; Desert Rose; White Sangria; Guerrouane Red; Mint Iced Tea.
- NEW! Botanas Botánico** Seafood Ceviche; Cachapa con Queso; White Corn Arepa; Coconut Tres Leches; Polar Beer; La Tizana; Monte Paschoal Reserve Tannat; Monte Paschoal Natural Brut White Sparkling Wine.
- France**
- Impressions de France** **HC** **RC** **360°** Experience the grandeur and charm of the French countryside through film. **20 minutes. Mobility Access:** Enter through LEFT side of entrance hallway.
- Chefs de France** **LD** **S** **SS** Onion soup, filet mignon and crème brûlée.
- Monsieur Paul** **LD** **S** **SS** Roasted duck, seafood and soufflés. **Mobility Access:** Accessible by elevator. Ask for assistance at the entrance of Chefs de France.
- Les Halles Boulangerie & Patisserie** **S** **S** Fresh baguette sandwiches, pastries and baked goods.
- L'Artisan des Glaces** **S** **S** Artisanal ice cream and sorbets.
- Fleur de Lys** Parisian style dumpling with vegetables and mushrooms; Pulled Duck confit, with garlic and parsley potatoes; Large Strawberry marshmallow macaron; Ice Pop Peach Grand Marnier Cocktail; La Vie en Rose St-Germain Vodka Slush; Kir Imperial with Sparkling Wine and Chambord Liqueur; Beer Kronenbourg Blanc 1664.
- Belle and Beast**
- Cinderella and Prince Charming Topiaries**
- International Gateway**
- Disney Phineas and Ferb: Agent P's World Showcase Adventure** **HC** Search for clues with Perry the Platypus to defeat Dr. Doofenshmirtz before he takes over World Showcase. **Interactive adventure. At your own pace. Additional starting point at Future World East. Look for 8 on the map.**
- World Traveler** Merchandise Package Pickup.
- United Kingdom**
- Rose & Crown Pub & Dining Room** **LD** **S** **SS** Steaks, fish and ale.
- Yorkshire County Fish Shop** **LD** **S** Fish and chips, beverages and ale.
- Peter Pan, Captain Hook and Tick Tock Croc Topiaries**
- NEW! Pollinator's Paradise with Winnie the Pooh Topiary**
- English Tea Garden** Presented by Twinings of London®
- NEW! Shakespeare Garden**
- Canada**
- O Canada!** **HC** **RC** **360°** View the very best Canada has to offer in this Circle-Vision 360 film. **14 minutes. Mobility Access:** Enter through path on RIGHT next to Le Cellier Steakhouse.
- Le Cellier Steakhouse** **LD** **S** **SS** Steaks, pasta and seafood.
- Joffrey's Coffee & Tea Co.**®
- Bambi and friends Topiaries**

Special Considerations for Attractions

SAFETY: Please abide by all safety warnings and notices.

Supervise children at all times. Children under age 7 years must be accompanied by a person age 14 years or older.

For your safety while on attractions, remain seated with hands, arms, feet and legs inside the vehicle. Supervise children.

Physical considerations on designated attractions:

WARNING! For safety, you should be in good health and free from high blood pressure, heart, back or neck problems, motion sickness, or other conditions that could be aggravated by this adventure. Expectant mothers should not ride.

Dining

- All dining locations listed accept the Disney Dining plans unless otherwise noted.
- Call 407-WDW-DINE (939-3463).
- B** - Breakfast **L** - Lunch
- D** - Dinner **S** - Snack
- S** = \$14.99 and less per adult
- SS** = \$15-\$29.99 per adult
- SSS** = \$30-\$59.99 per adult
- See www.disneydiningpricinginfo.com for pricing details.

Devices Available at Guest Relations

- Assistive Listening**
- Handheld Captioning**
- Video Captioning**
- Audio Description**
- Shopping**